

Community Forum:

Expansion of VDM to include 6th Grade



Wednesday, March 16th, 6:00 pm



San Ysidro
School District EST - 1887

Purpose



To support the Otay Mesa community, which continues to grow due to new housing developments in the area.

By alleviating overcrowding at Ocean View Hills Elementary, which has reached its maximum capacity for students on campus.

OVHS Capacity = **95%**

VDM Capacity = **69%**

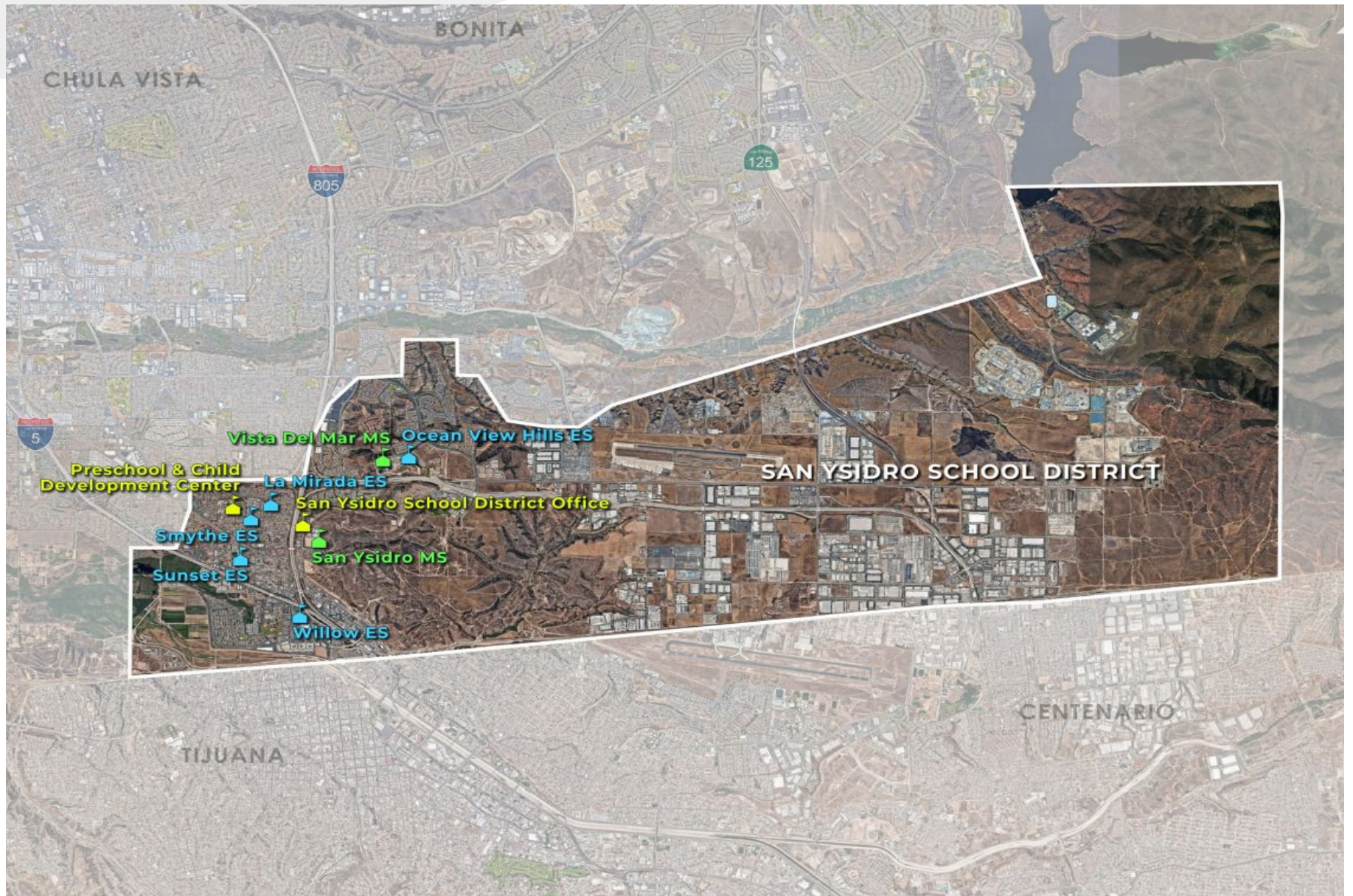
Proposal

Shift 6th Grade student population
from
Ocean View Hills (OVHS)
to
Vista Del Mar (VDM)

OVHS = Pre-K - GR 5

VDM = GR 6 - GR 8

San Ysidro School District



Facilities Plan

Vista Del Mar Middle School



Future Construction at Vista Del Mar





Long Range Master Facility Plan

Scheduling of District Facility Work

Implementation Plan Presented on March 10, 2022

Millions	Site	Increment One	Site	Increment Two	Site	Increment Three	Site	Increment Four
\$28								
\$27								
\$26	All	Playgrounds						
\$25	VDM	New Wing	SYMS	Modernization				
\$24								
\$23								
\$22								
\$21	BYR	Community Center					VDM	Misc Renovation
\$20								
\$19								
\$18	CDC	La Mirada Remodel			BYR		DO	Renovation Original Building
\$17								
\$16								
\$15	CDC	La Mirada Wing	SYMS	New Secure Entry/Office			DO	Addition
\$14			LM	New Secure Entry/Office				
\$13	SYMS	Modz Planning	All	HVAC/Roofing	All	HVAC/Roofing	All	HVAC/Roofing
\$12								
\$11	All	Furniture	All	Site Development	All	Site Development	All	Site Development
\$10	All	Site Development	All	Site Development	All	Site Development	All	Site Development
\$9	All	Technology	All	Technology	All	Technology	All	Technology
\$8	All	Technology	All	Technology	All	Technology	All	Technology
\$7	All	Security	All	Furniture	All	Furniture	All	Furniture
\$6	All	Security	All	Furniture	All	Furniture	All	Furniture
\$5	All	Security	All	Furniture	All	Furniture	All	Furniture
\$4	All	Security	All	Furniture	All	Furniture	All	Furniture
\$3	All	Security	All	Furniture	All	Furniture	All	Furniture
\$2	All	Security	All	Furniture	All	Furniture	All	Furniture
\$1	All	Security	All	Furniture	All	Furniture	All	Furniture

Middle School Elements

Middle Schools:

Buildings:

- Replacing portable buildings with permanent facilities
- Expanding/Constructing/Upgrading science labs
- Energy efficient upgrades to lighting, HVAC, daylighting and glazing systems

Site Improvements:

- Improving 'curb appeal' (landscaping, fencing, and painting)
- Enhancing site security (single point of entry)
- Playfield drainage and irrigation technologies
- Development of fitness courses
- Additional parking and drop off lanes

Furniture/Technology:

- Consideration of more flexible furniture (group projects, more individualized instruction)
- Seamless access to desktop/handheld technology



Middle School Science Lab



Room Dimensions
40.5' L x 24.5' W



Integration of 6th Grade

6th Grade Logistics



School Schedule

7th & 8th Grade Instructional Day

Regular Day - 8 am to 2:19 pm

Minimum Day 8 am to 12:45 pm

6th Grade Instructional Day

Regular Day - 8:30 am to 2:45 pm

Minimum Day - 8:15 am to 1:30 pm

6th Grade Instructional Programs

Classroom Configuration

- ❖ **Self Contained Classrooms**
 - Students Maintain 1 teacher for Instruction
- ❖ **Special Education Services**
 - Special Day Classes (SDC) will continue in Self Contained Model
 - Resource Specialist Program (RSP) services will continue to be supported by staff
 - Additional specialized services will be delivered on site per students IEP

Specialized Programs

- ❖ **Dual Language Program**
 - Continue for 6th Grade
 - Potential to grow program into 7th & 8th grade
- ❖ **Sci Phy Program**
 - Continue in 6th Grade
 - Potential for Robotics Club as enrichment

6th Grade - Grading & Report Cards

❖ Grading Period

- Students will maintain their current report card period with Trimesters
- Parent Conference will be held at the end of each trimester

❖ Report Cards

- Students will be graded based on a standards based report card
- Report cards will maintain 1-4 grading scale
 - 4 = Above Standard
 - 3 = At Standard
 - 2 = Approaching Standard
 - 1 = Not making progress to Standard

Next Steps

Planning - Timeline

April 14	Board Presentation & Public Hearing
May	Student Visits Orientation & Campus Tour
May - July	Prepare Classrooms and Facilities
July	Parent & Student Orientations

Questions?

